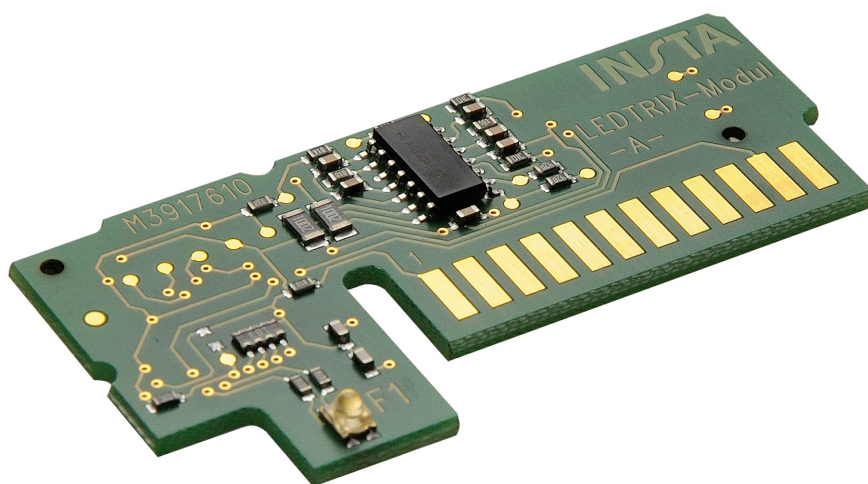


instalight Vario interface module LEDTRIX

V2 FM LX 001

Interface module LEDTRIX



Main Features

- > Control of all types (LEDLUX linear, LEDLUX prisma, LEDLUX plane) and colour variants (TW, RGB, RGBW) of LEDLUX LX
- > Allows connection of two LEDTRIX Systems with 60 channels each (supply via external power supply units inside of the LEDTRIX systems with max. 120 W per output)

Specifications

Rated voltage	DC 28 V	Interface	LEDTRIX
Power consumption	0.105 W	Design	SMD-Modul with "Edge Connector"
Laying instructions	SELV	Field bus	2 x LEDTRIX with 60 channels each
		Distance	100 m

